

Suggested levels for Guided Reading, DRA™, Lexile®, and Reading Recovery™ are provided in the Pearson Scott Foresman Leveling Guide.

The New Park



Genre

Comprehension Skills and Strategy

Realistic fiction

- Theme
- Setting
- Monitor and Fix Up

Scott Foresman Reading Street 1.3.3



scottforesman.com



by Ellen Leigh

illustrated by Martin Lemelman





The New Park



by Ellen Leigh
illustrated by Martin Lemelman



Editorial Offices: Glenview, Illinois • Parsippany, New Jersey • New York, New York
Sales Offices: Needham, Massachusetts • Duluth, Georgia • Glenview, Illinois
Coppell, Texas • Ontario, California • Mesa, Arizona





Every effort has been made to secure permission and provide appropriate credit for photographic material. The publisher deeply regrets any omission and pledges to correct errors called to its attention in subsequent editions.

Unless otherwise acknowledged, all photographs are the property of Scott Foresman, a division of Pearson Education.

Photo locators denoted as follows: Top (T), Center (C), Bottom (B), Left (L), Right (R), Background (Bkgd)

Illustrations by Martin Lemelman

Photograph 12 Library of Congress

ISBN: 0-328-13185-7

Copyright © Pearson Education, Inc.

All Rights Reserved. Printed in the United States of America. This publication is protected by Copyright, and permission should be obtained from the publisher prior to any prohibited reproduction, storage in a retrieval system, or transmission in any form by any means, electronic, mechanical, photocopying, recording, or likewise. For information regarding permission(s), write to: Permissions Department, Scott Foresman, 1900 East Lake Avenue, Glenview, Illinois 60025.

2 3 4 5 6 7 8 9 10 V010 14 13 12 11 10 09 08 07 06 05



Mom, Dad, and Norm left their house to take a walk in the neighborhood. They waved to their friends.

“I like our neighborhood,” Dad said. “We have a school. We have stores. We have places to eat.”





"We can drive our car or ride buses to get around," Mom said.

"We have everything we need here," Dad said.

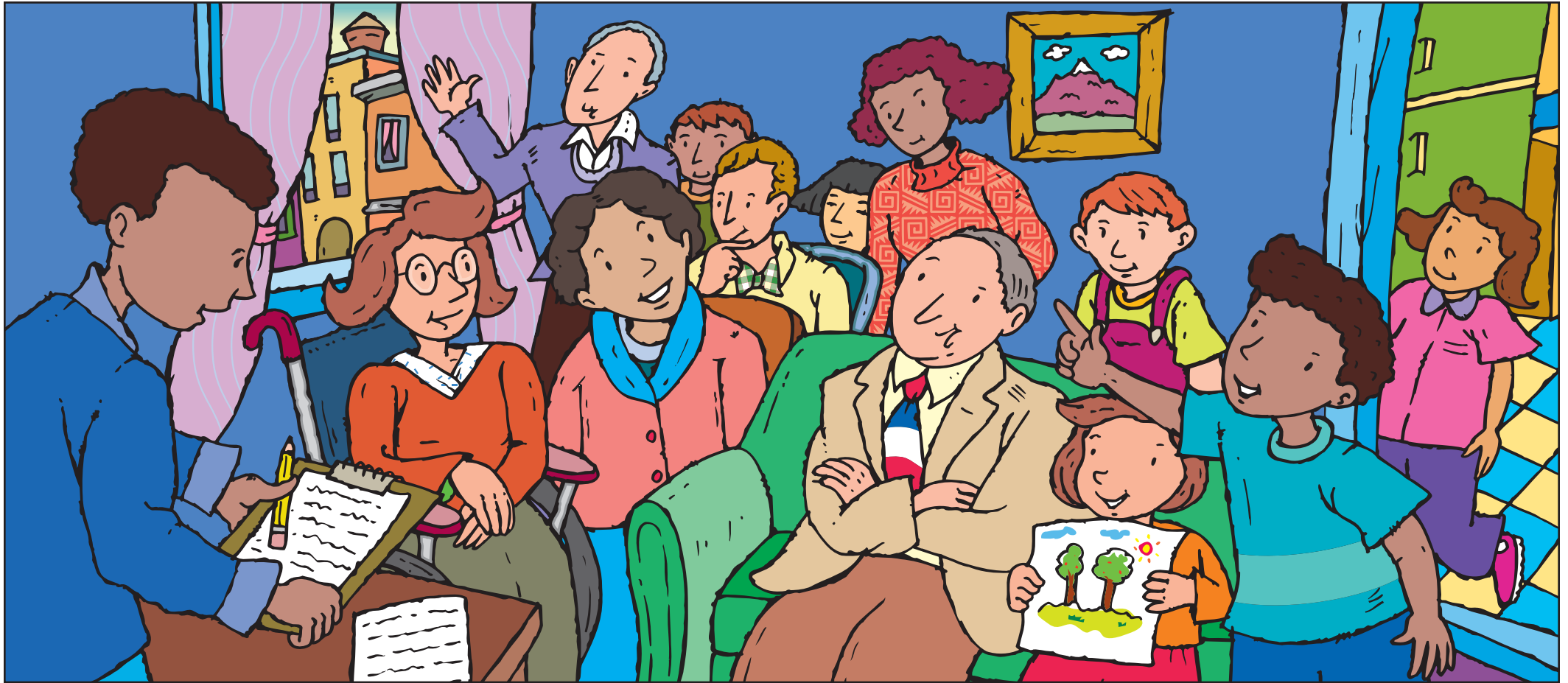
"We do not have everything we need," Norm said.




"We need a neighborhood park," Norm said.

"That is a very good idea," Dad said.
"We can see if other people think so too. We can have a meeting."





 "Why do we need a park?" a neighbor named Ed asked at the meeting.

"We could play sports in a park," Norm said.

"We could sit under trees in a park," Pam said.

 "We could take walks in a park," Ted said.

"We could feed ducks in a park," Mom said.





“What do you think, Ed? Do you see why we need a park?” Dad asked.
“Yes, I sure do see why we need one,” Ed said.



“Let’s all help make the park. We can plant patches of grass. We can plant flowers and bushes and trees,” Mom said.





The One-Room Schoolhouse

Read Together

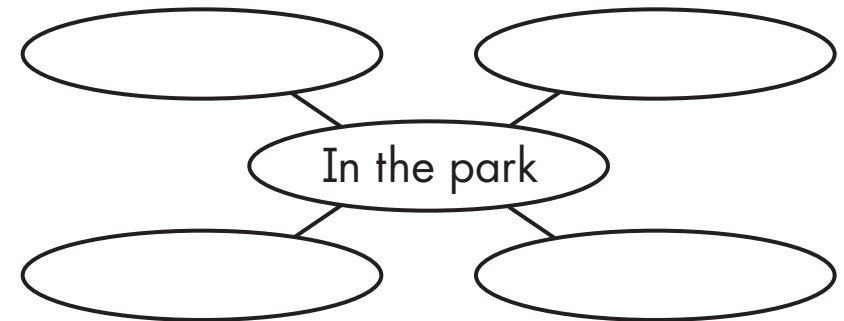
Communities change over time. Important parts of communities change too. Schools are important parts of communities. Schools are very different today from schools long ago. Most schools today have separate classrooms for different grades. There is a teacher for each class. But in the past some schools were in buildings with only one room. These schools had only one teacher for all the grades. What is your school like?



Think and Share

Read Together

1. What is the big idea of this story?
2. What kinds of things did people plan to do in the park? Show them on a web like this one.



3. Find words in this story that have the -or sound that you hear in the word *thorn*. Make a list.
4. Do you think Norm had a good idea for a change in his neighborhood? What change would you like to make in your neighborhood?

